

DESCRIPTION

Is a plastic fiber optic terminal box that load plastic splitter cassette 1x8 or 1x16 for optical fiber splitting and distribution. It support 16 drop cable output and cable entry without cutting. It is used for outdoor wall mounted or pole mounted application

FEATURES

- Material: ABS+UV plastic
- Max. 16 fibers splicing capacity
- Can load 1pc splitter cassette 1x16 or 2pcs splitter cassette 1x8
- Cable ports: 2pcs M20 cable ports for $\Phi 6\sim 11\text{mm}$ cable entry
- 1 oval port support $\Phi 6\sim 18\text{mm}$ cable entry without cutting
- 16pcs 2*3mm drop cable or 3.0mm round cable output ports
- Wall mounting and pole mounting application
- Waterproof, outdoor using, IP65

APPLICATIONS

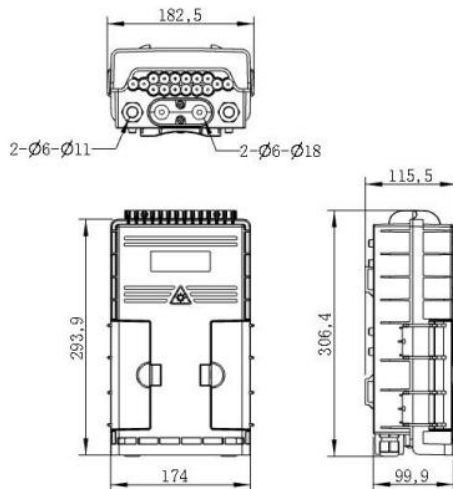
FTTH access network / Telecommunication Networks / CATV Networks / Data communications Networks / Local Area Networks

SPECIFICATION:

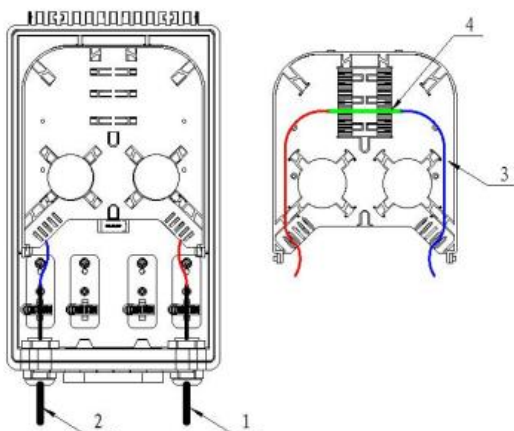
Dimension(mm)	182.5X306.4X115.5
Material	ABS
Splitter cassette	2pcs D-1X8 or 1pc D-1X16
Splicing capacity	18 fibers
Cable port	2 PG gland + 1 oval + 16 drop cable port
Application	Outdoor wall mounted or pole mounted



Drawings: (mm)



Instruction:



- 1- Cable entry port
- 2- Cable output port
- 3- Fiber optic splice tray (back side with splicing module)
- 4- Heat protection shrinkable sleeve

ACCESSORIES:

Heat protection shrinkable sleeve	60mm*2.6*1.2	As per using capacity
Cable tie	3*120mm white	6 pcs
Countersunk Screws	C type 4*30 metal	4 pcs
Plastic Expansion Pipe	Ø6mm plastic white	4 pcs
Insulating tape	0.15*17mm 8 yards black	1 roll