

SITE MONITOR



Monitoring of up to 9 parameters:

- AC voltage sensor
- DC voltage sensor
- Temperature sensor
- Humidity sensor
- 3 dry contact inputs
- 1 digital sensor
- 1 NO/NC (Normally Open/Normally Closed) output relay



SITE MONITOR DATA MANAGEMENT

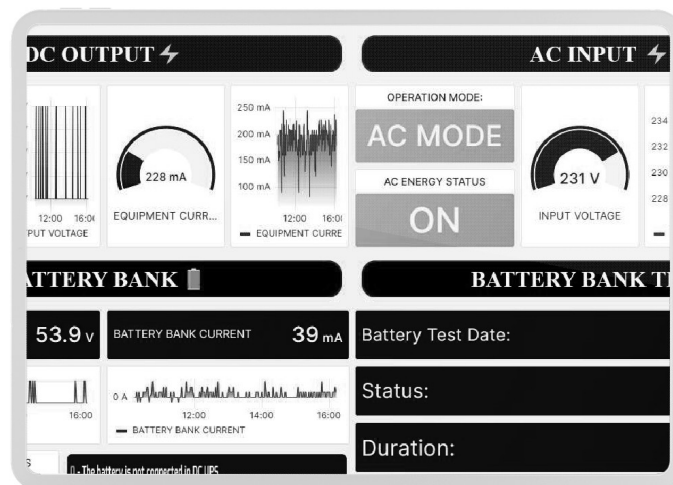
Monitoring of up to 9 parameters:

ZABBIX

Grafana

LibreNMS

Ready for Libre NMS;
Also works with The Dude.



@algcomtelecom

AMBIENT CONDITIONS DATA CENTER



- The temperature must be below 71°F/22°C;
- Relative humidity must be above 40% and below 60%.

ALG power SiteMonitor	
Home	Status
Status	Date/Time: * 06/04/2024 @ 21:28:11
Commands	Sensors
User	Temperature 1: 23°C
Network	Relative humidity 1: 44%
SNMP	AC voltage 1: 233.59V
Install	ac
Date/Time	DC voltage 1: 45.58V
Schedule	dc
Logout	Dry contact 1: 0
	puerta
	Dry contact 2: 1
	luz
	Dry contact 3: 1
	N/A
	Digital sensor input 1: 0
	N/A
	Relay output 1: open
	alarma/sirena automatic

Copyright ALGCom 2024. All rights reserved.

CONTROL DATA CENTER ZABBIX



Triggers

Group all Host SITE MONITOR ALGCOM_EN

All templates / SITE MONITOR ALGCOM_EN Applications Items 9 Triggers 3 Graphs 3 Screens Discovery rules Web scenarios

Filter

Severity all Not classified Information Warning Average High Disaster

State all Normal Unknown

Status all Enabled Disabled

Apply Reset

Severity	Name	Expression
High	Alarm high temperature in server room	Problem: {SITE MONITOR ALGCOM_EN:temperature1.prev()}>22 Recovery: {SITE MONITOR ALGCOM_EN:temperature1.prev()}<-21.5
Warning	High humidity in server room	Problem: {SITE MONITOR ALGCOM_EN:relativehumidity1.prev()}>60 Recovery: {SITE MONITOR ALGCOM_EN:relativehumidity1.prev()}>59.9
Warning	Low humidity in server room	Problem: {SITE MONITOR ALGCOM_EN:relativehumidity1.prev()}<40 Recovery: {SITE MONITOR ALGCOM_EN:relativehumidity1.prev()}>40.5

- Alarm for temperature >22°C
- Alarm for Humidity <40% and >60%.

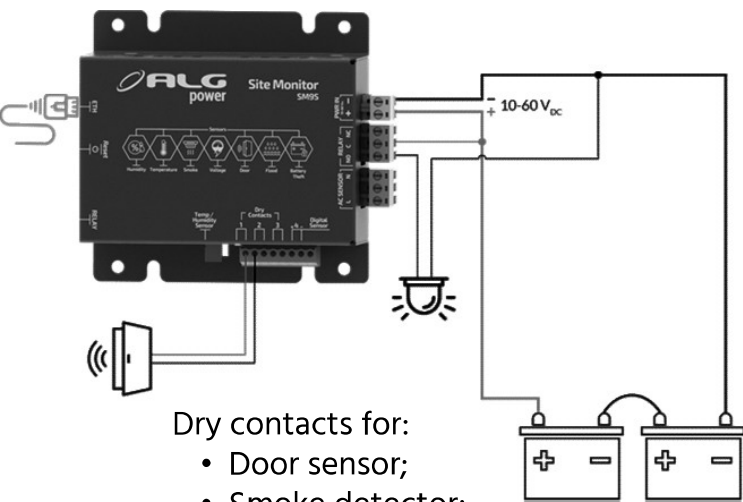
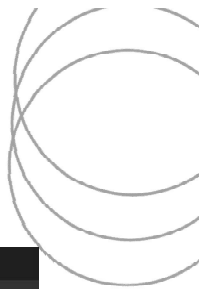
SITE MONITOR POWER



What can be solved **remotely**?
What can be solved **automatically**?

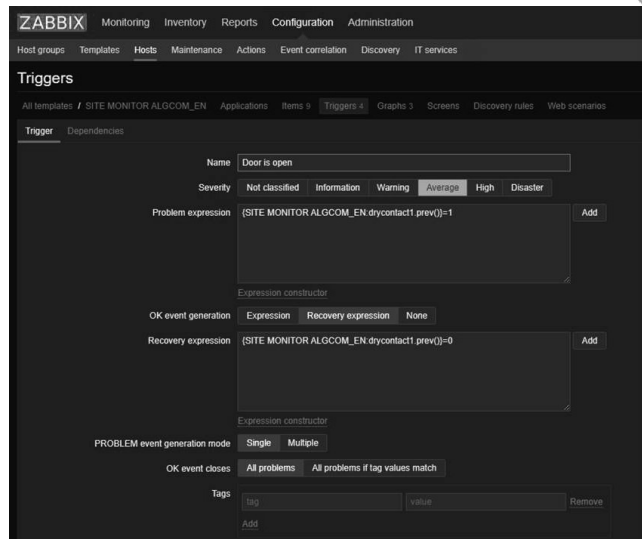


SITE MONITOR SMART CABINET -DRY CONTACTS



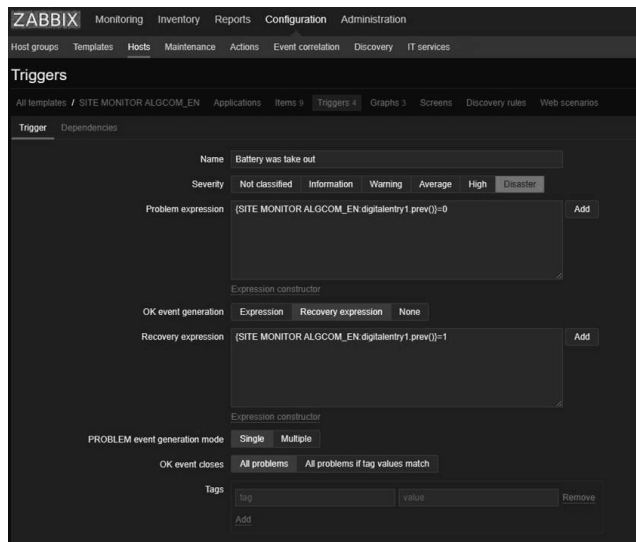
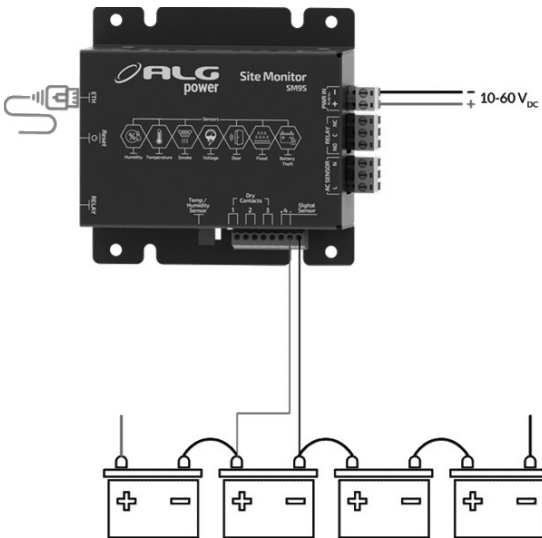
Dry contacts for:

- Door sensor;
- Smoke detector;



SM - SMART CABINET BATTERY ROBBERY

Set up an alarm on the server;
Monitor if the battery has been removed;



SITE MONITOR AUTOMATIC MODE RELAY



Take action based on sensor readings.

ALG power SiteMonitor

Home Commands

Status Configure relay control mode or force some state into it.

Commands

User

Network

SNMP

Install

Date/Time

Schedule

Logout

Relay settings

Mode: Automatic

Close relay if Temperature is \geq than 40 °C

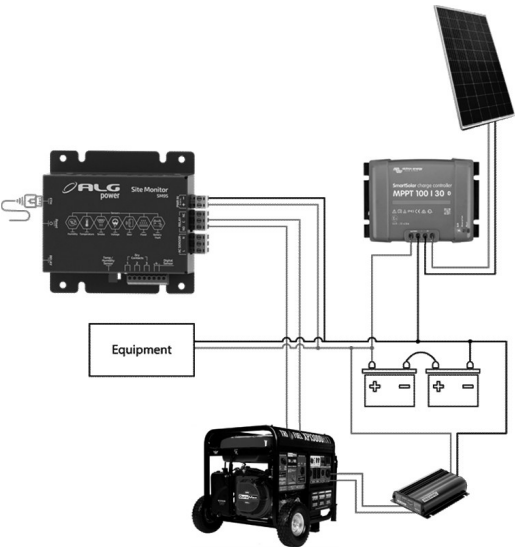
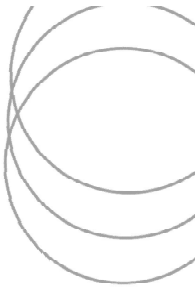
Open relay if is \leq than 30 °C

Delay: 10 s

SAVE

Copyright ALGCom 2024. All rights reserved.

SITE MONITOR SOLAR + GENERATOR



Monitoring DC voltage;
Can activate the generator to
charge batteries;

SITE MONITOR APPLICATION LIST FOR ADDITIONAL USES



- Application for measuring battery voltage;
- Application for monitoring dummy UPS;
- Application for thermostat functionality;
- Timer for tower lamp;
- Leak sensor for flood detection;
- Remote monitoring of AC power supply;
- Monitoring of temperature and humidity levels in equipment cabinets;
- Detection of unauthorized access to equipment cabinets or sites;
- Monitoring of backup generator status and fuel levels;
- Integration with environmental sensors for smoke or fire detection.